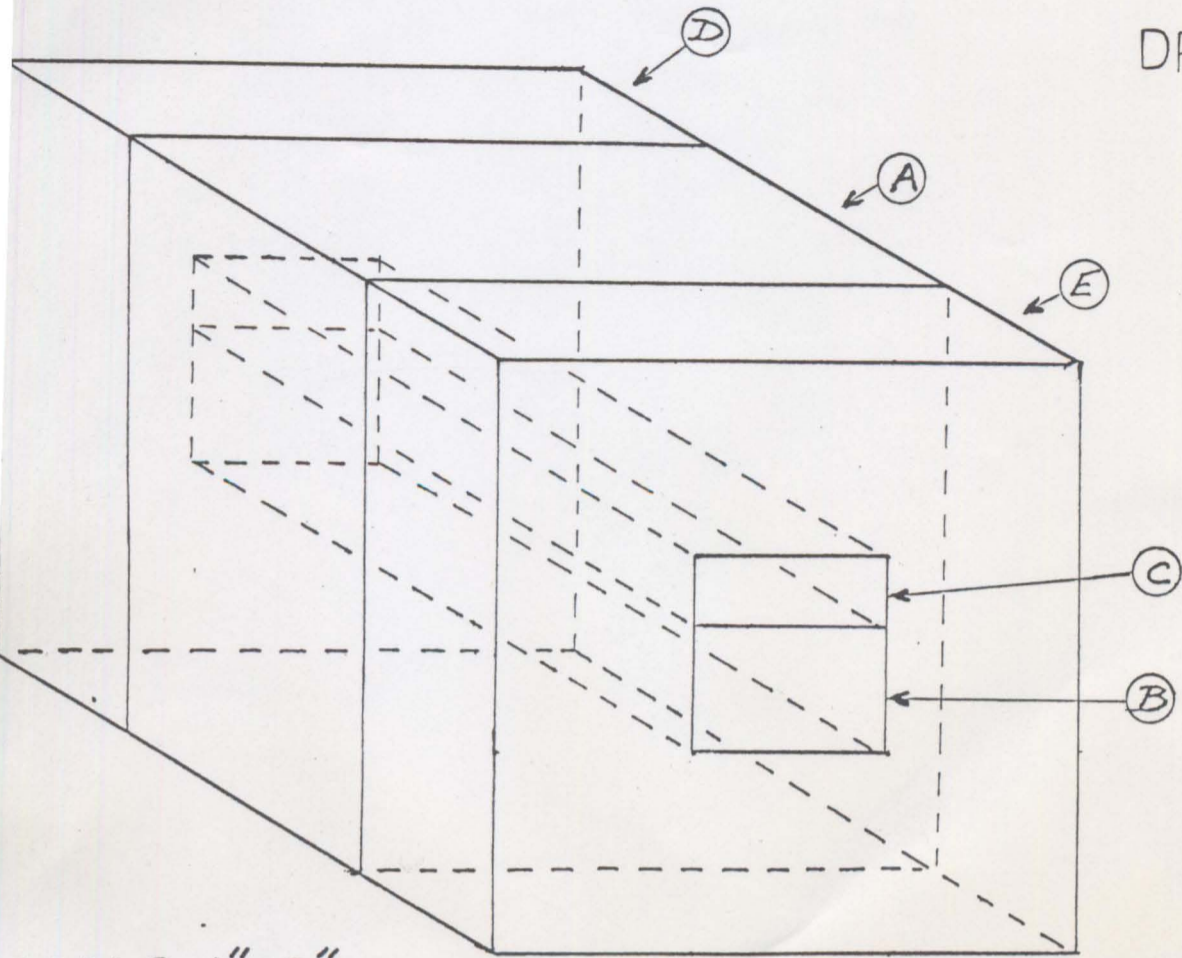


DRAWING NO. 2



SCALE 1"=9"

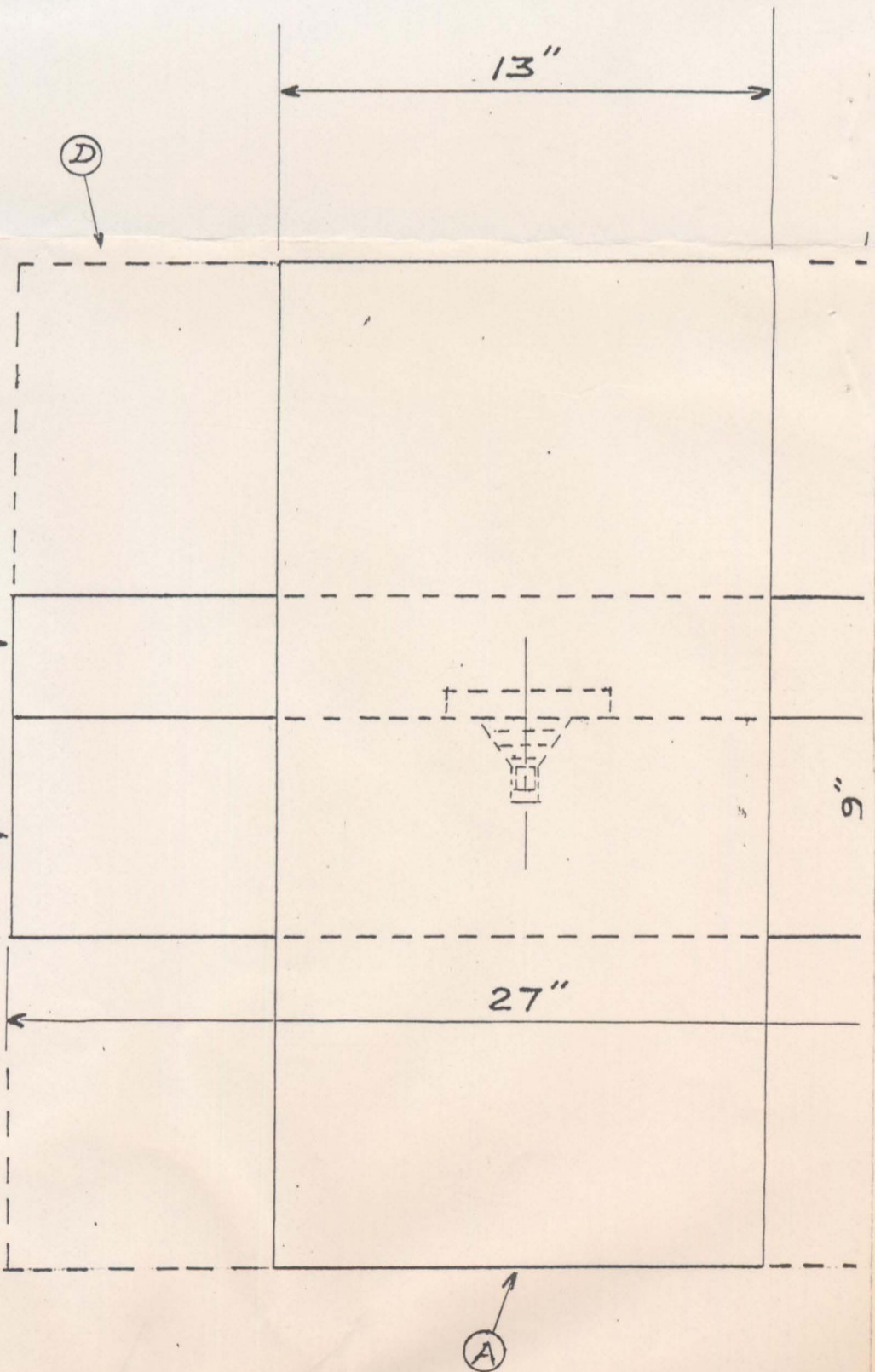
REDUCED SCALE - ASSEMBLY

NOTES:

(D) AND (E) OPTIONAL.

AN ALTERNATE ARRANGEMENT HAS (B) AND (C) OF 13" LENGTH, (THE THICKNESS OF (A)) WITH A YOKE SURROUNDING (A) AND CONTACTING BOTH ENDS OF (B) AND (C).

ANOTHER OPTION, WITH (B) AND (C) OF 13" AND (A) ON ITS SIDE, IS TO USE RENTAL TIME ON INDUSTRIAL HYDRAULIC PRESS - AGAINST THE ENDS OF (B) AND (C).



47004674